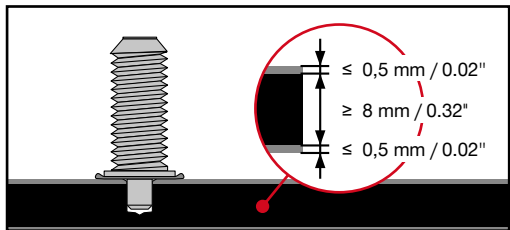


CE
21
Hilti AG FL-9494 Schaan
Hilti-DX-DoP-008
ETA-20/1042
EAD 333037-00-0602
0672
Threaded studs for connection of materials to structural steel

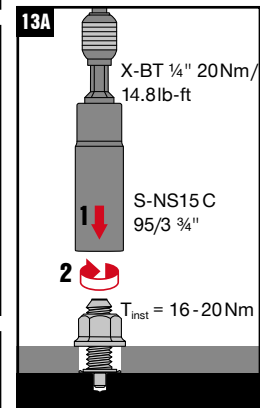
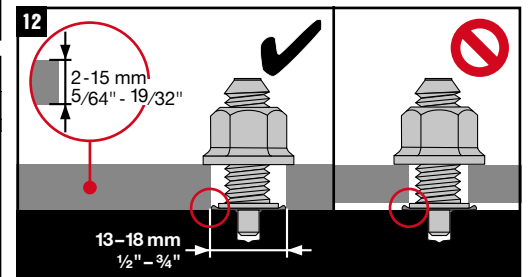
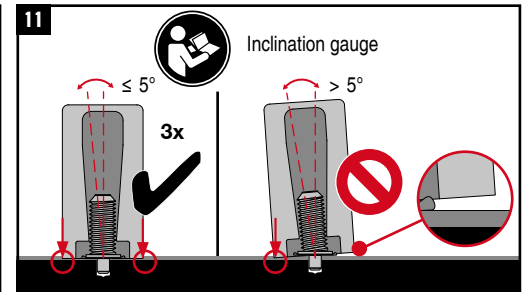
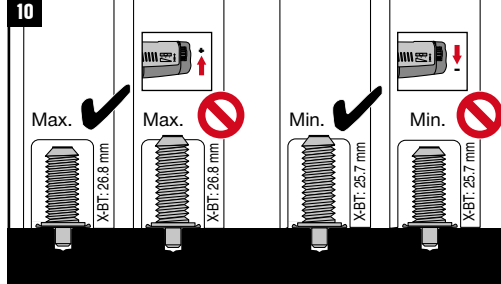
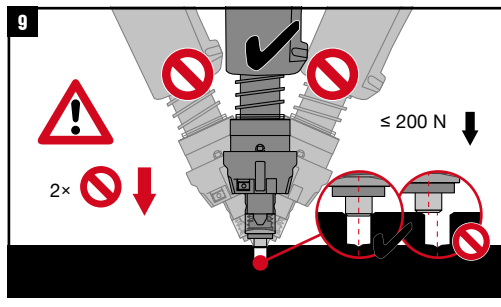
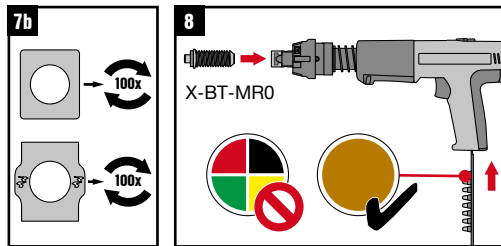
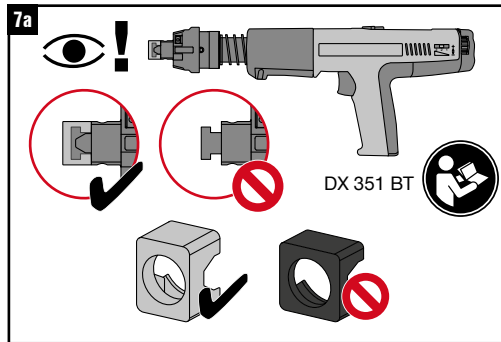
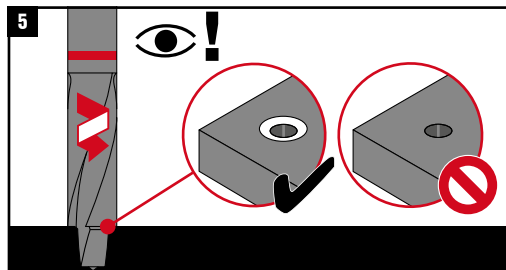
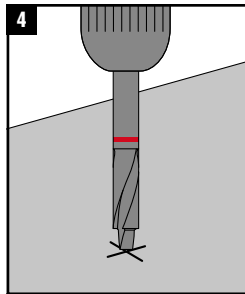
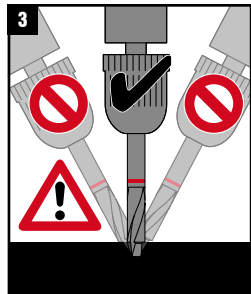
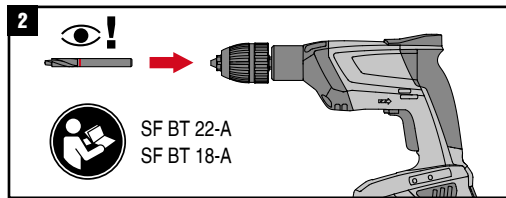
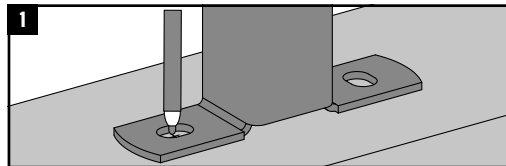
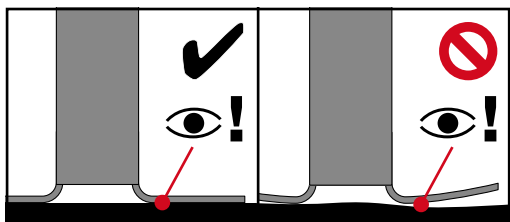
0-1km

Hilti Corrosion handbook / DFTM

A4 316 Equivalent Corrosion Resistance

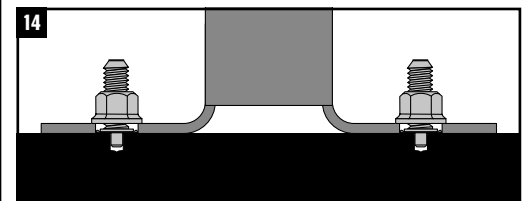


Use with						
X-BT-MR0 M10/15 SN 8	SF BT 22-A SF BT 18-A	DX 351-BT	X-BT 1/4" 20Nm/14.8 ft lb	S-M NU-FL-M10 A4	S-NS 15 C 95/3 3/4"	X-IG BT M10

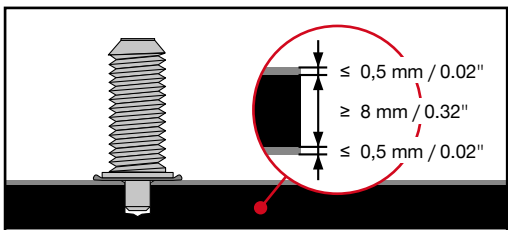
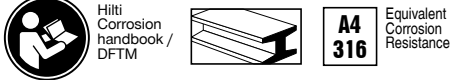


**13B**

SF 6-A22	1	5
SF 6H-A22	1	5
SF 10W-A22	4	11
SF 8M-A22	4	11
SFC 14-A	2	11
SFC 22-A	2	11



CE
21
Hilti AG FL-9494 Schaan
Hilti-DX-DoP-008
ETA-20/1042
EAD 333037-00-0602
0672
Threaded studs for connection of materials to structural steel



Use with						
X-BT-MR0 M10/15 SN 8	SF BT 22-A SF BT 18-A	BX 3-BT	X-BT 1/4\"/> 20Nm/ 14,8 ft lb	S-M NU-FL-M10 A4	S-NS 15 C 95/3 3/4\"/>	X-IG BT M10

