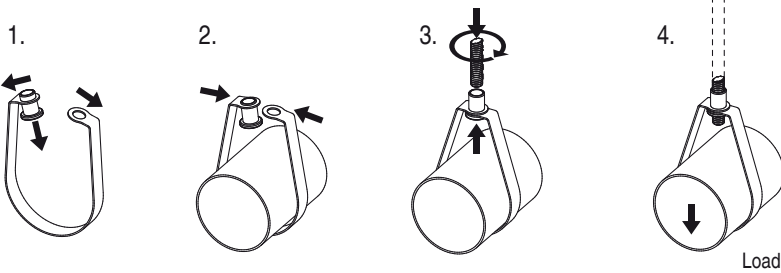
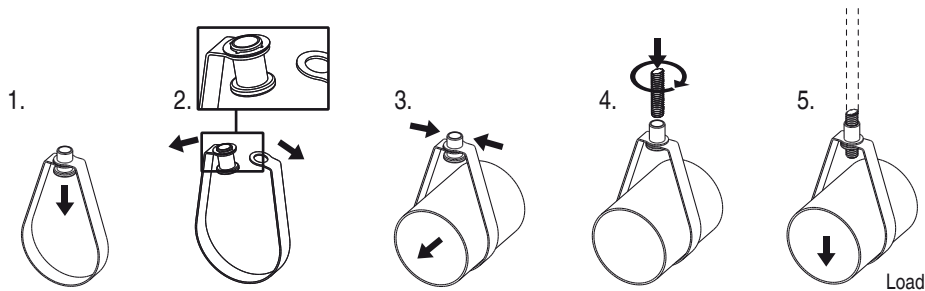


## Installation instruction loop hanger

Installation option sizes 1/2" to 2" (nut caulked):



Installation option sizes 2-1/2" to 8" (nut with washer):



nominal Pipe size	Rod size [RS]		Approval
1/2"	3/8"	M10	UL
3/4"			FM / UL
1"			FM / UL
1-1/4"			FM / UL
1-1/2"			FM / UL
2"			FM / UL
2-1/2"			FM / UL
3"			FM / UL
4"			FM / UL
6"			1/2"
8"	FM / UL		